

# SCULPFUN H5 Honeycomb Panel

## List of Items

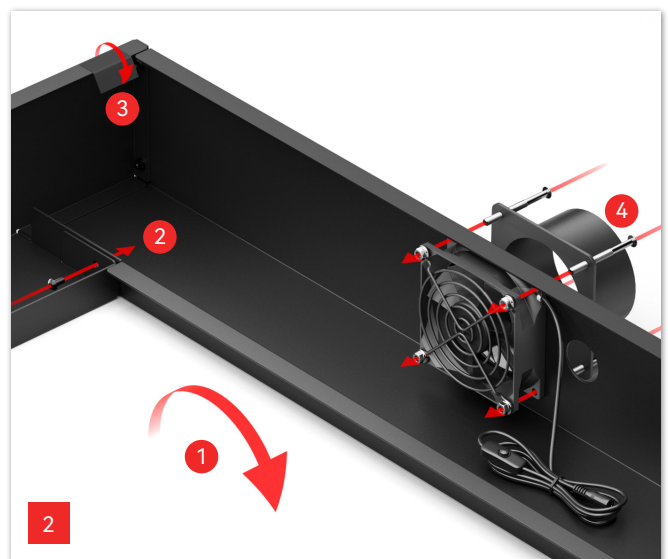
1. 400\*400 Honeycomb Panel
2. Metal Pad
3. Exhaust Fan
4. Fan Guard
5. Flange
6. Hose Clamp
7. Silicone Sleeve
8. Power Adapter
9. Screws \* 12+4 & Nuts \* 4
10. Installation Tools
11. Anti-slip pads\*8
12. L/R Frame
13. L/R Frame
14. Front Frame
15. Rear Frame
16. Exhaust Duct



## Assembly Illustration



1. Assemble the frame using 8 screws.

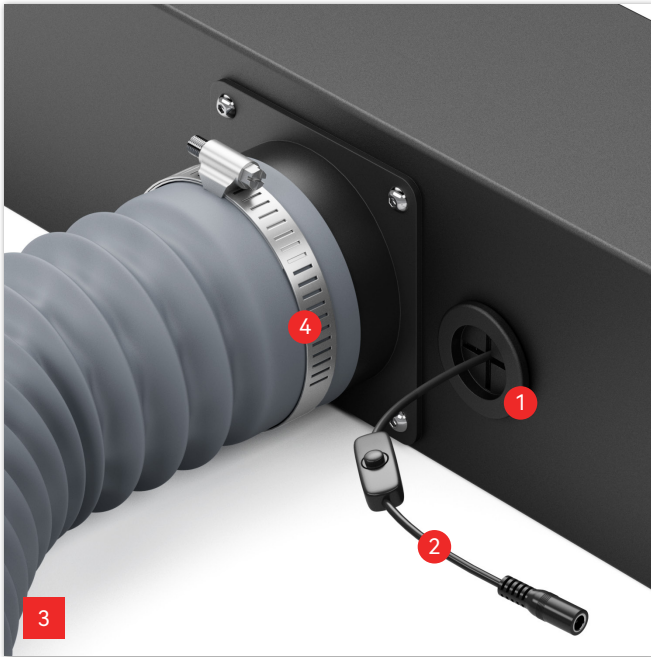


2-1. Turn the frame upside down.

2-2. Fix the frame from the inside with 4 screws.

2-3. Stick four anti-slip pads on the bottom of the frame.

2-4. Install the fan, fan guard and flange. Make sure the sticker label of the fan faces the flange.



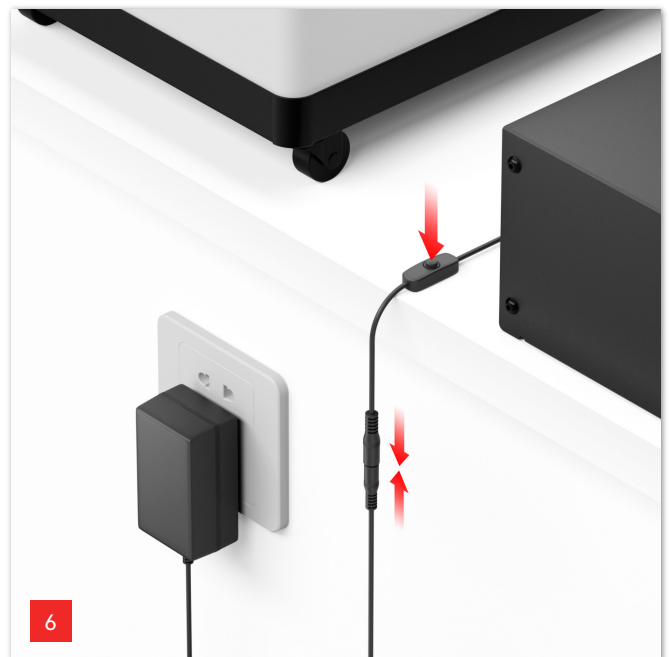
- 3-1. Install the silicone sleeve.
- 3-2. Thread the power cord through the silicone sleeve.
- 3-3. Turn the frame upside down again.
- 3-4. Secure the exhaust duct with a hose clamp.



- 4-1. Pass the metal backing plate through the bracket and place it on the tabletop.
- 4-2. Stick four anti-slip pads on the bottom of the honeycomb panel.
- 4-3. Place the honeycomb panel on the bracket.



- 5-1. Place the engraving machine on top of H5. (The exhaust function is only effective during cutting, and your engraving machine must have an air assist system.)
- 5-2. Connect the exhaust duct to the air purifier or lead it outdoors.



- 6-1. Connect the power supply.
- 6-2. Turn on the switch and the fan will start working.



Scan the code to obtain the video user guide.  
 Technical Support: [support@sculpfun.com](mailto:support@sculpfun.com)

