

ACMER P1 APP Operation Manual



Download Method

There are two ways to obtain APP, as follows:

1. Reach <https://acmer3d.com/> Download our software.
2. Find the software from the memory card that come with the laser engraving machine.



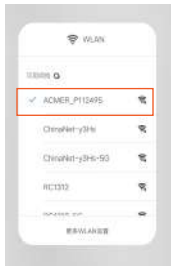
software and drive



ACMerv2.1.0.apk

APP connection mode

1.1 AP connection



1.First connect the mainboard WiFi,
the name start as ACMER-P1,
The default password is 12345678



2.Open APP to connect the
machine

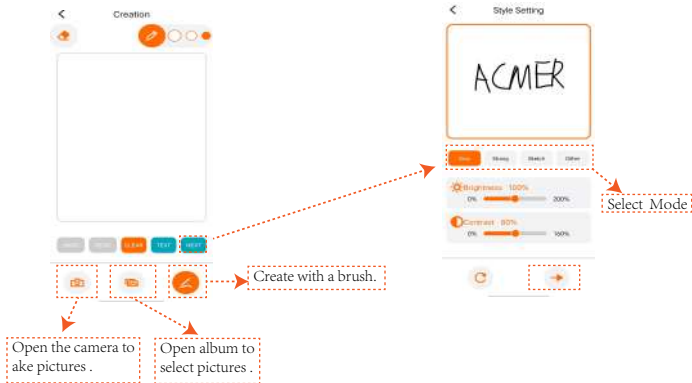


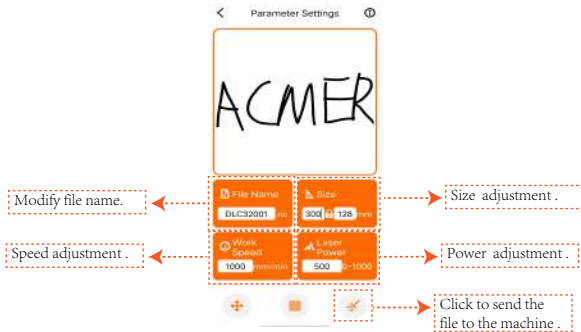
2.Enter IP address and connect
The IP address defaults to
192.168.4.1

2.1 Home



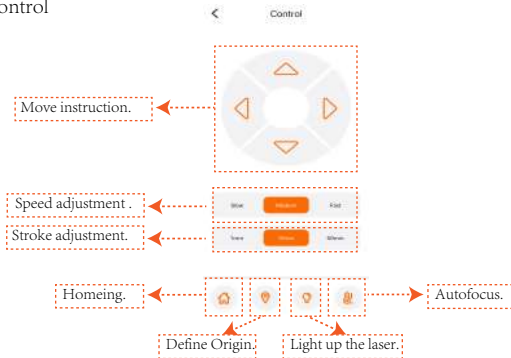
2.2 Creation





Tips: Before sending files to the machine, make sure there is a memory card on the motherboard

2.3 Control



2.3 Material



Select the picture



Select the slicing mode and adjust the picture contrast



Adjust the engraving speed, power, range and other parameters, and upload

2.4 Graving



Tips: Before sending files to the machine, make sure there is a memory card on the motherboard